



# GMT MONTHLY MEMBERSHIP PROGRESS REPORT

Results as of: 6/30/2020

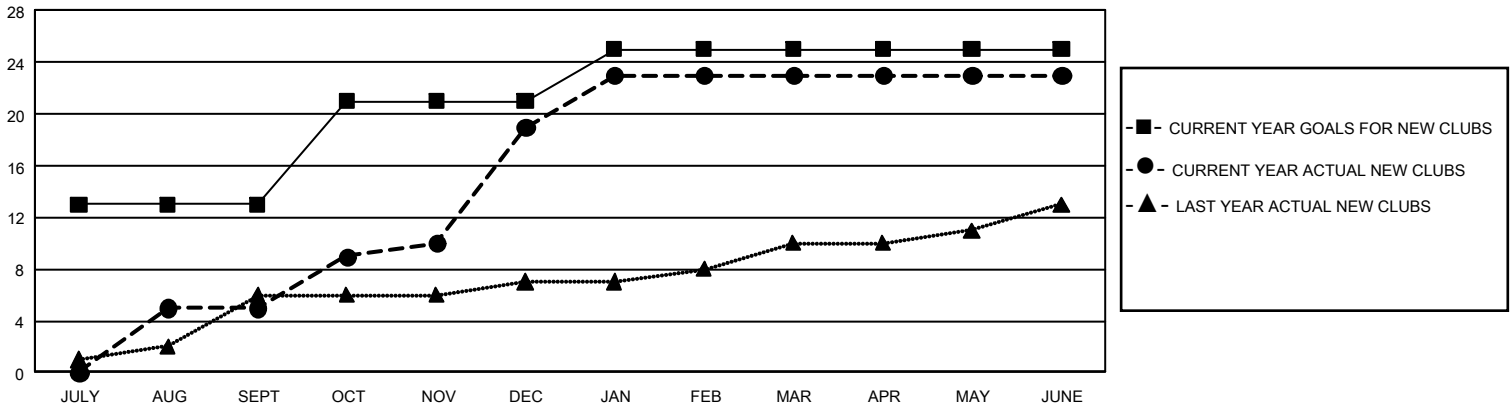
## GMT Constitutional Area 5 - K, Group L

GMT: OPEN

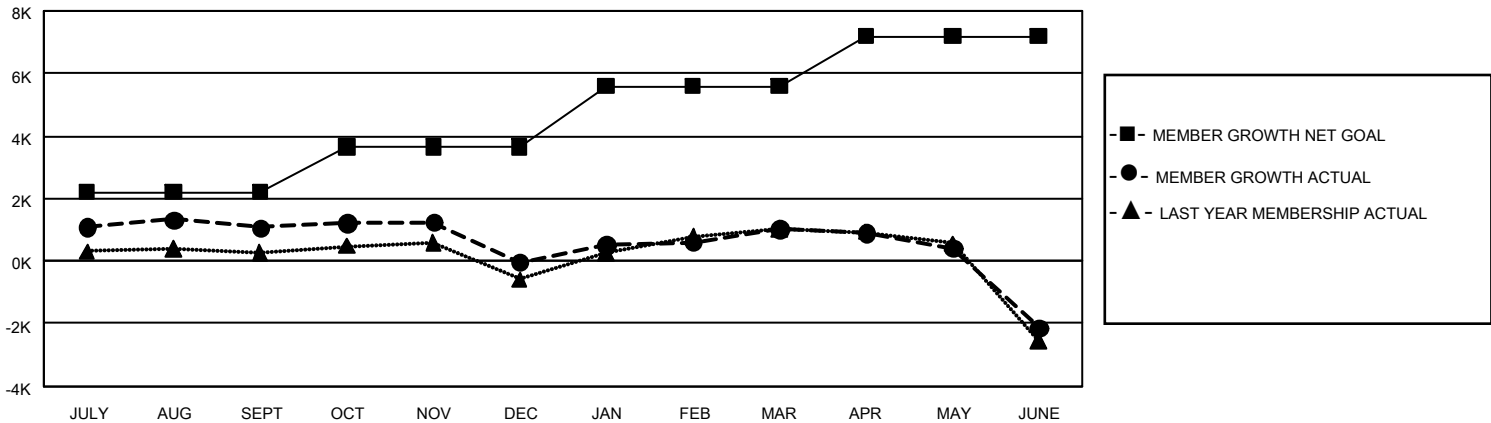
REPORT DOES NOT INCLUDE CLUBS IN UNDISTRICTED AREAS.

Clubs				Members			
RESULTS FOR 2019-2020				RESULTS FOR 2019-2020			
QUARTER	NEW CLUB GOAL	NEW CLUBS	DROPPED CLUBS	QUARTER	MEMBER GROWTH NET GOAL	MEMBER GROWTH ACTUAL	DROPPED MEMBERS ACTUAL (including transfers)
JULY/AUG/SEPT	39	5	3	JULY/AUG/SEPT	6,630	2,781	1,620
OCT/NOV/DEC	24	14	1	OCT/NOV/DEC	4,350	2,008	3,073
JAN/FEB/MAR	12	4	25	JAN/FEB/MAR	5,820	1,863	667
APR/MAY/JUNE	0	0	2	APR/MAY/JUNE	4,770	1,058	4,128

GOALS AND ACTUAL NEW CLUBS CUMULATIVE



GOALS AND ACTUAL MEMBERS CUMULATIVE



<b>DROPPED CLUBS: 31</b>	951 CLUBS OF 1,075 ADDED 1 OR MORE NEW MEMBERS	<u>GENDER DISTRIBUTION</u>	
<u>DROPPED MEMBERS</u>		MALE	33,976 (72.39%)
DECEASED	130	FEMALE	12,958 (27.61%)
CLUB CANCELLED	55	TOTAL FAMILY UNIT MEMBERS 5,209	
OTHER	9,303		
TOTAL	9,488		
<a href="#">CLICK HERE FOR CUMULATIVE MEMBERSHIP DATA</a>			